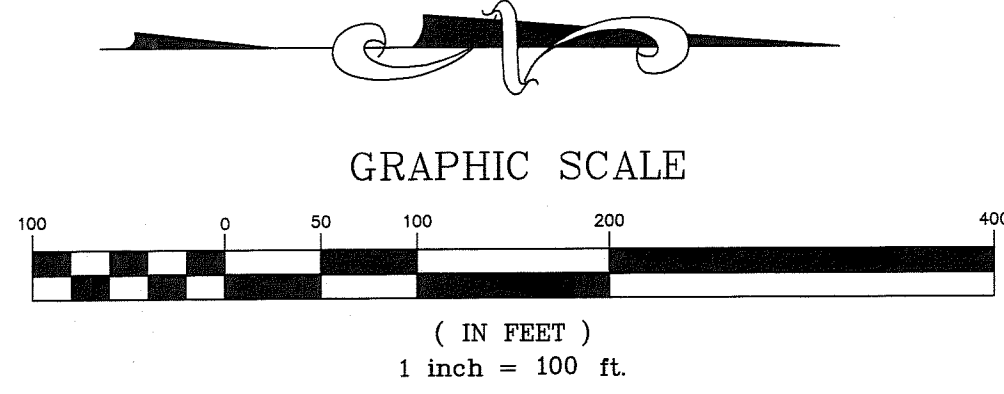
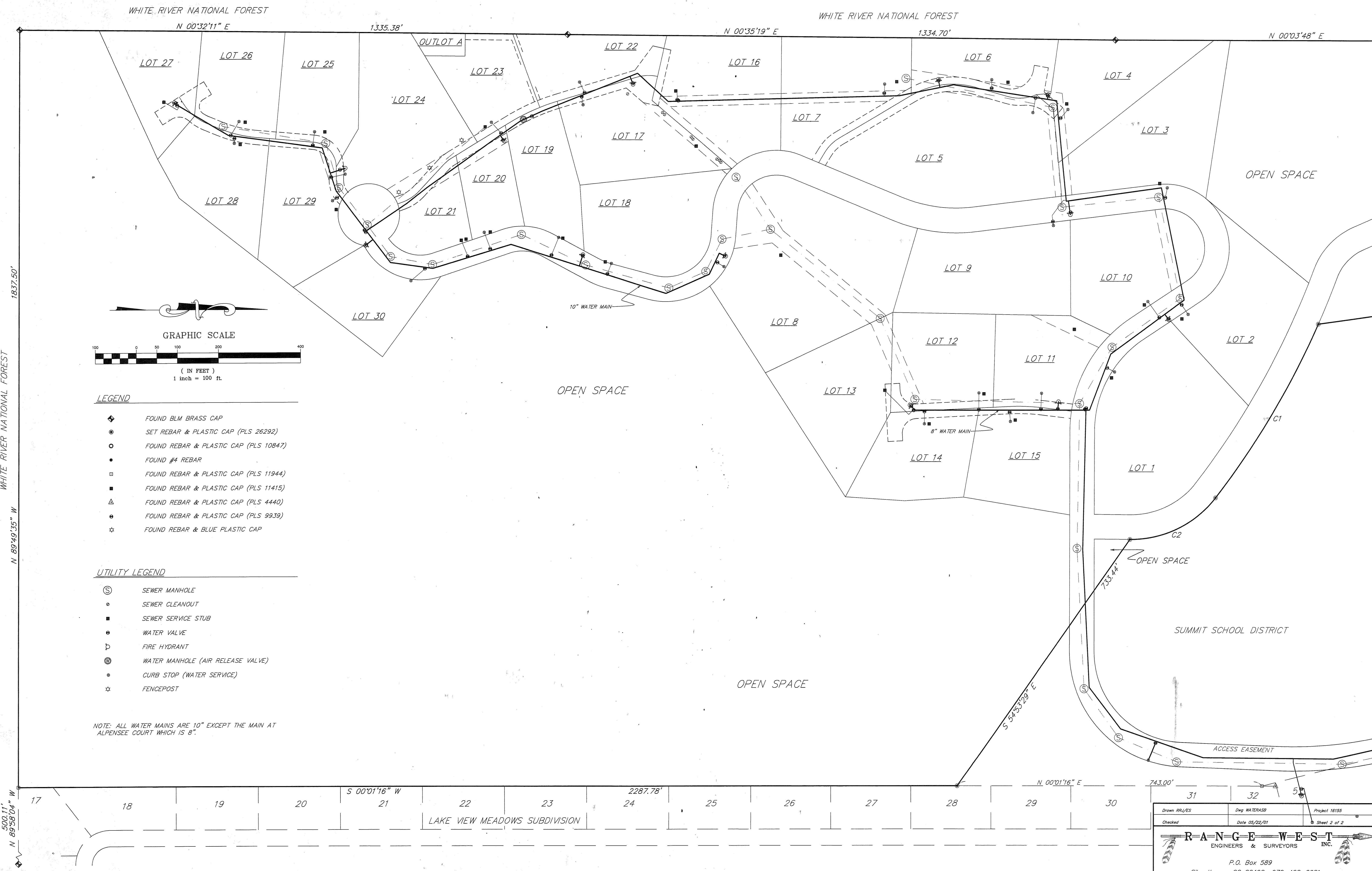


WATER AS-BUILTS AT AMENDED HIGHLAND MEADOWS PUD
 LOCATED IN SECTION 1, TOWNSHIP 6 SOUTH, RANGE 78 WEST OF THE 6TH PRINCIPAL MERIDIAN
 SUMMIT COUNTY, COLORADO



- LEGEND**
- ◆ FOUND BLM BRASS CAP
 - SET REBAR & PLASTIC CAP (PLS 26292)
 - FOUND REBAR & PLASTIC CAP (PLS 10847)
 - FOUND #4 REBAR
 - FOUND REBAR & PLASTIC CAP (PLS 11944)
 - FOUND REBAR & PLASTIC CAP (PLS 11415)
 - △ FOUND REBAR & PLASTIC CAP (PLS 4440)
 - ◉ FOUND REBAR & PLASTIC CAP (PLS 9939)
 - ☆ FOUND REBAR & BLUE PLASTIC CAP

- UTILITY LEGEND**
- ⊙ SEWER MANHOLE
 - SEWER CLEANOUT
 - SEWER SERVICE STUB
 - WATER VALVE
 - ▽ FIRE HYDRANT
 - ⊕ WATER MANHOLE (AIR RELEASE VALVE)
 - CURB STOP (WATER SERVICE)
 - ☆ FENCEPOST

NOTE: ALL WATER MAINS ARE 10" EXCEPT THE MAIN AT ALPENSEE COURT WHICH IS 8".

C:\P\RIGHTEST\WATERASB Title May 22 13:26:12 2004 - RANGE WEST, INC. (RRU)

Drawn RRU/ES	Dwg WATERASB	Project 18155
Checked	Date 05/22/01	Sheet 2 of 2

RANGE WEST
 ENGINEERS & SURVEYORS INC.

P.O. Box 589
 Silverthorne, CO 80498 970-468-6281