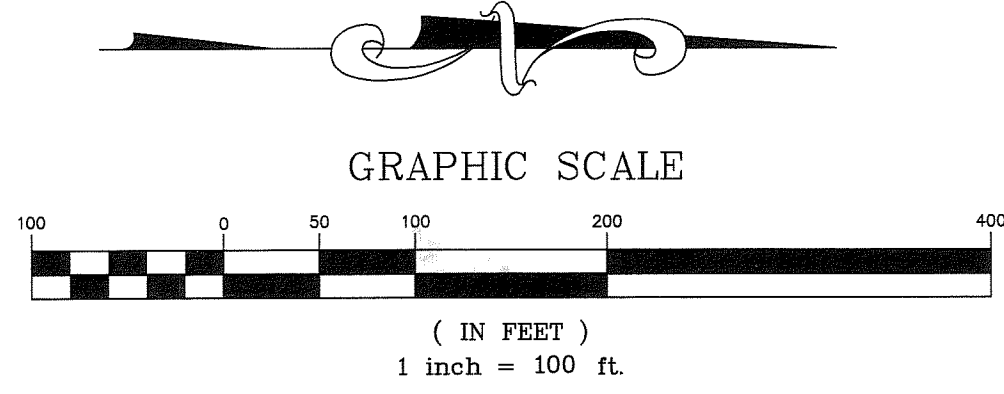
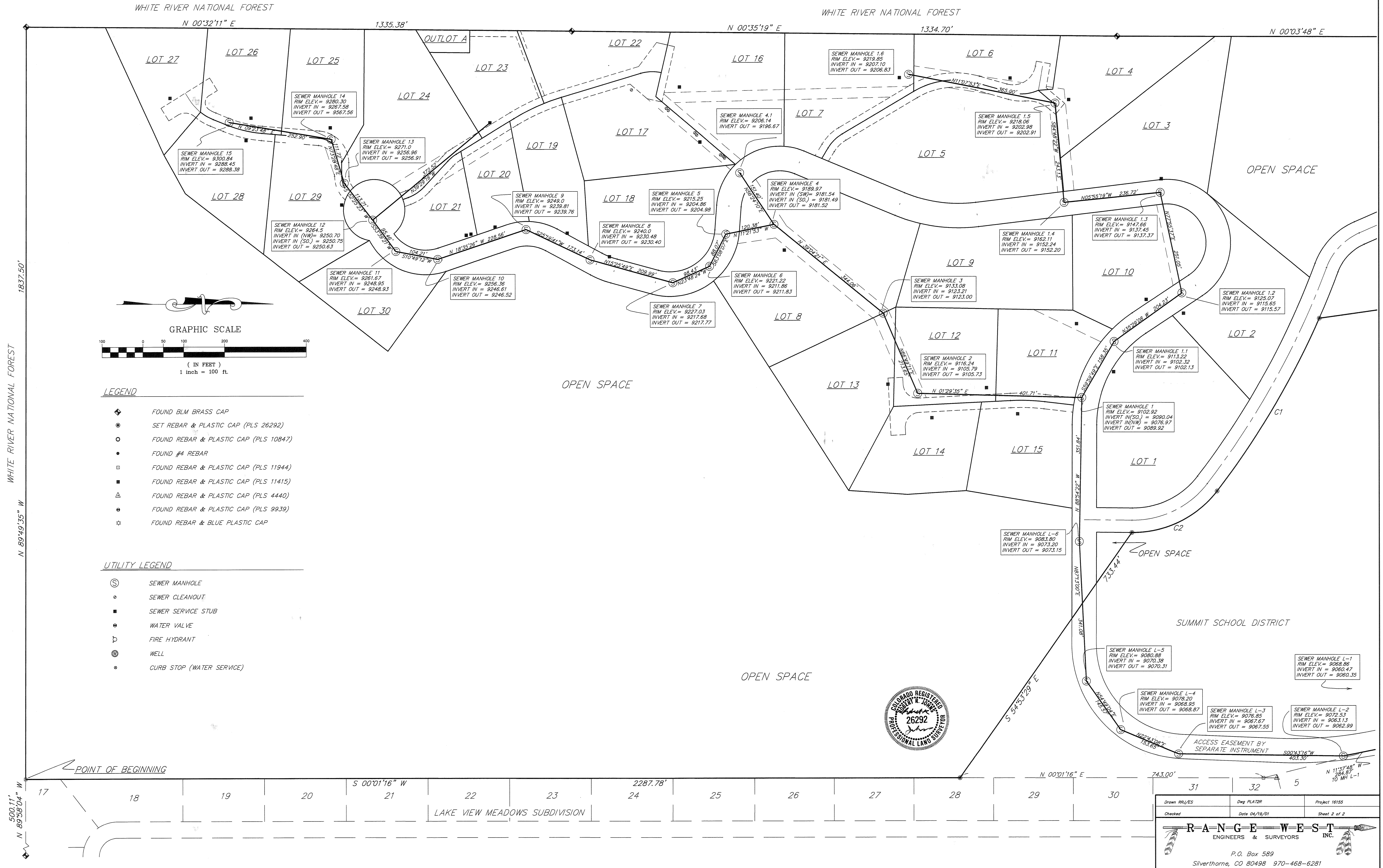


SEWER AS-BUILTS AT AMENDED HIGHLAND MEADOWS PUD

LOCATED IN SECTION 1, TOWNSHIP 6 SOUTH, RANGE 78 WEST OF THE 6TH PRINCIPAL MERIDIAN
SUMMIT COUNTY, COLORADO



- LEGEND**
- ◆ FOUND BLM BRASS CAP
 - SET REBAR & PLASTIC CAP (PLS 26292)
 - FOUND REBAR & PLASTIC CAP (PLS 10847)
 - FOUND #4 REBAR
 - FOUND REBAR & PLASTIC CAP (PLS 11944)
 - FOUND REBAR & PLASTIC CAP (PLS 11415)
 - △ FOUND REBAR & PLASTIC CAP (PLS 4440)
 - FOUND REBAR & PLASTIC CAP (PLS 9939)
 - ☆ FOUND REBAR & BLUE PLASTIC CAP

- UTILITY LEGEND**
- ⊙ SEWER MANHOLE
 - SEWER CLEANOUT
 - SEWER SERVICE STUB
 - WATER VALVE
 - ▷ FIRE HYDRANT
 - ⊕ WELL
 - CURB STOP (WATER SERVICE)



Drawn RRA/ES	Dwg. PLATZR	Project 16155
Checked	Date 04/19/01	Sheet 2 of 2

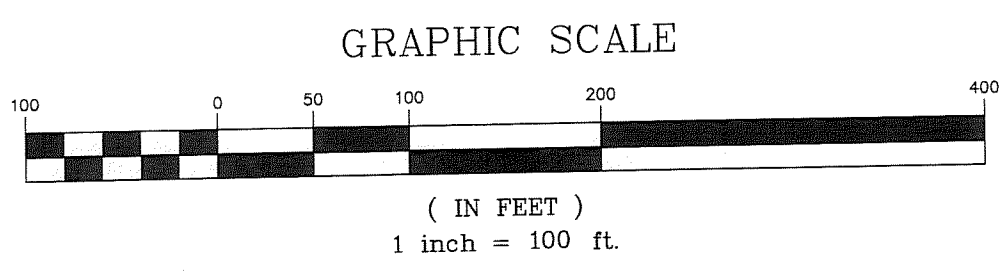
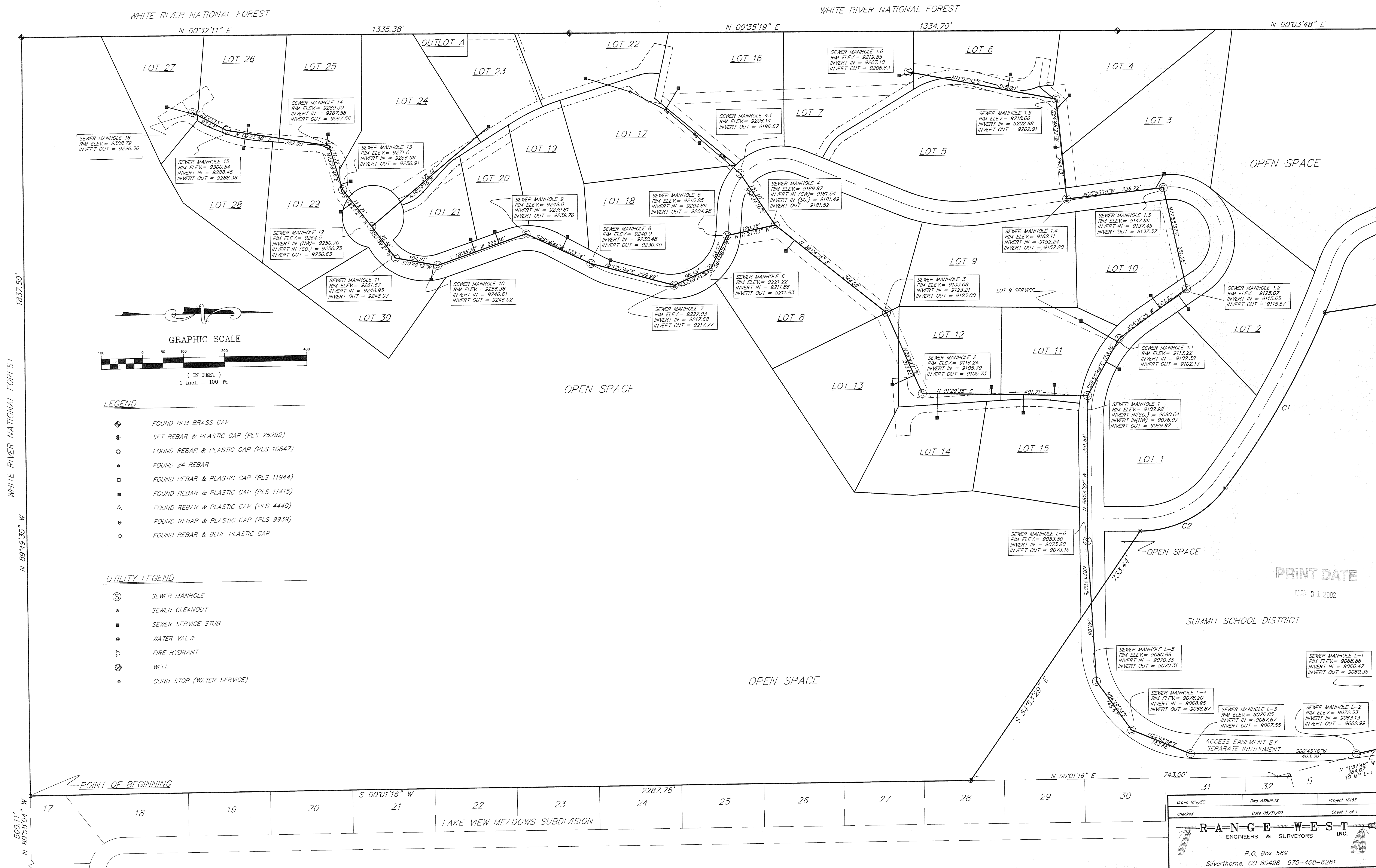
RANGE WEST
ENGINEERS & SURVEYORS INC.

P.O. Box 589
Silverthorne, CO 80498 970-468-6281

C:\P\HIGHTS\ASBUILTS E-F1 Apr 20 06:39:33 2001 RANGE WEST, INC. (RRI)

SEWER AS-BUILTS AT HIGHLAND MEADOWS PUD

LOCATED IN SECTION 1, TOWNSHIP 6 SOUTH, RANGE 78 WEST OF THE 6TH PRINCIPAL MERIDIAN
SUMMIT COUNTY, COLORADO



- LEGEND**
- ◆ FOUND BLM BRASS CAP
 - SET REBAR & PLASTIC CAP (PLS 26292)
 - FOUND REBAR & PLASTIC CAP (PLS 10847)
 - FOUND #4 REBAR
 - ◻ FOUND REBAR & PLASTIC CAP (PLS 11944)
 - FOUND REBAR & PLASTIC CAP (PLS 11415)
 - △ FOUND REBAR & PLASTIC CAP (PLS 4440)
 - ⊙ FOUND REBAR & PLASTIC CAP (PLS 9939)
 - ☆ FOUND REBAR & BLUE PLASTIC CAP

- UTILITY LEGEND**
- ⊙ SEWER MANHOLE
 - SEWER CLEANOUT
 - SEWER SERVICE STUB
 - WATER VALVE
 - ⊖ FIRE HYDRANT
 - ⊙ WELL
 - CURB STOP (WATER SERVICE)

PRINT DATE
MAY 31 2002

SUMMIT SCHOOL DISTRICT

SEWER MANHOLE L-6
RIM ELEV. = 9083.80
INVERT IN = 9073.20
INVERT OUT = 9073.15

SEWER MANHOLE L-5
RIM ELEV. = 9080.88
INVERT IN = 9070.38
INVERT OUT = 9070.31

SEWER MANHOLE L-4
RIM ELEV. = 9078.20
RIM ELEV. = 9076.85
INVERT IN = 9068.95
INVERT OUT = 9068.87

SEWER MANHOLE L-3
RIM ELEV. = 9076.85
INVERT IN = 9067.67
INVERT OUT = 9067.55

SEWER MANHOLE L-2
RIM ELEV. = 9072.53
INVERT IN = 9063.13
INVERT OUT = 9062.99

SEWER MANHOLE L-1
RIM ELEV. = 9068.86
INVERT IN = 9060.47
INVERT OUT = 9060.35

ACCESS EASEMENT BY SEPARATE INSTRUMENT

Drawn: RAJ/ES	Dwg: ASBUILTS	Project: 16155
Checked:	Date: 05/31/02	Sheet: 1 of 1

RANGE WEST
ENGINEERS & SURVEYORS INC.

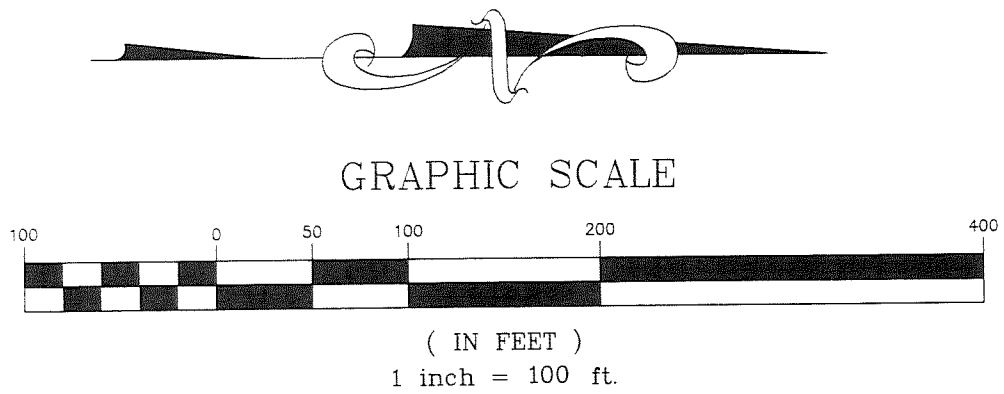
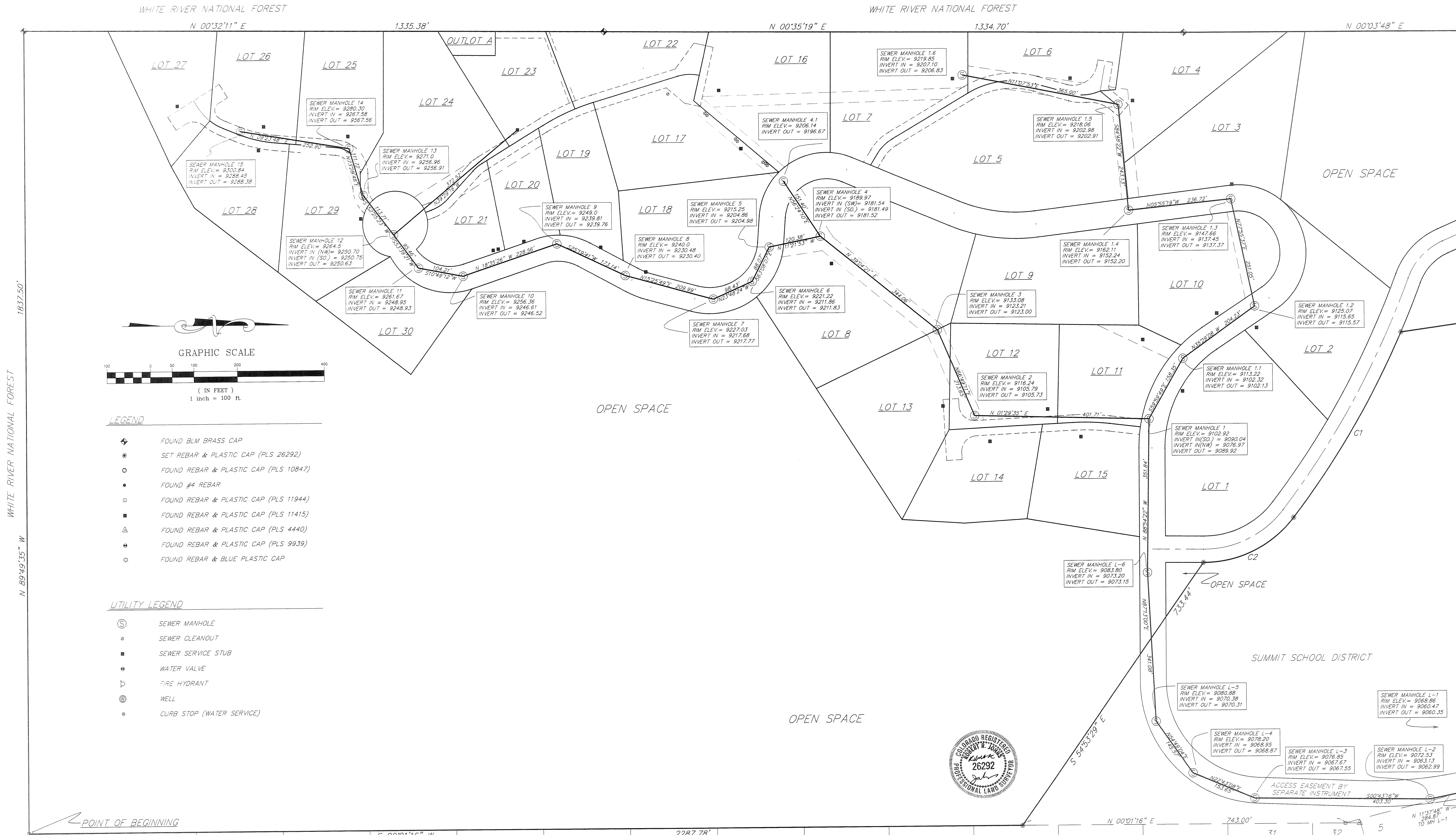
P.O. Box 589
Silverthorne, CO 80498 970-468-6281

P:\PROJECTS\ASBUILTS F-1 MAY 31 09:32:07 2002 RANGE WEST, INC. (RRJ)

5/31/2002 Sewer AS-Built Only Copy 2

SEWER AS-BUILTS AT AMENDED HIGHLAND MEADOWS PUD

LOCATED IN SECTION 1, TOWNSHIP 6 SOUTH, RANGE 78 WEST OF THE 6TH PRINCIPAL MERIDIAN
SUMMIT COUNTY, COLORADO



- LEGEND**
- ◆ FOUND BLM BRASS CAP
 - SET REBAR & PLASTIC CAP (PLS 26292)
 - FOUND REBAR & PLASTIC CAP (PLS 10847)
 - FOUND #4 REBAR
 - FOUND REBAR & PLASTIC CAP (PLS 11944)
 - ▣ FOUND REBAR & PLASTIC CAP (PLS 11415)
 - △ FOUND REBAR & PLASTIC CAP (PLS 4440)
 - ⊕ FOUND REBAR & PLASTIC CAP (PLS 9939)
 - ⊛ FOUND REBAR & BLUE PLASTIC CAP

- UTILITY LEGEND**
- ⊙ SEWER MANHOLE
 - SEWER CLEANOUT
 - SEWER SERVICE STUB
 - ⊕ WATER VALVE
 - ⊖ FIRE HYDRANT
 - ⊙ WELL
 - ⊙ CURB STOP (WATER SERVICE)



Drawn RRL/ES	Eng PLAT/DR	Project 16155
Checked	Date 04/19/01	Sheet 2 of 2

RANGE WEST
ENGINEERS & SURVEYORS INC.
P.O. Box 589
Silverthorne, CO 80498 970-468-6281

© UNP/HP/HST/AS-BUILTS EPI Apr. 20 06:39:33 2001 RANGE WEST, INC. (R66)