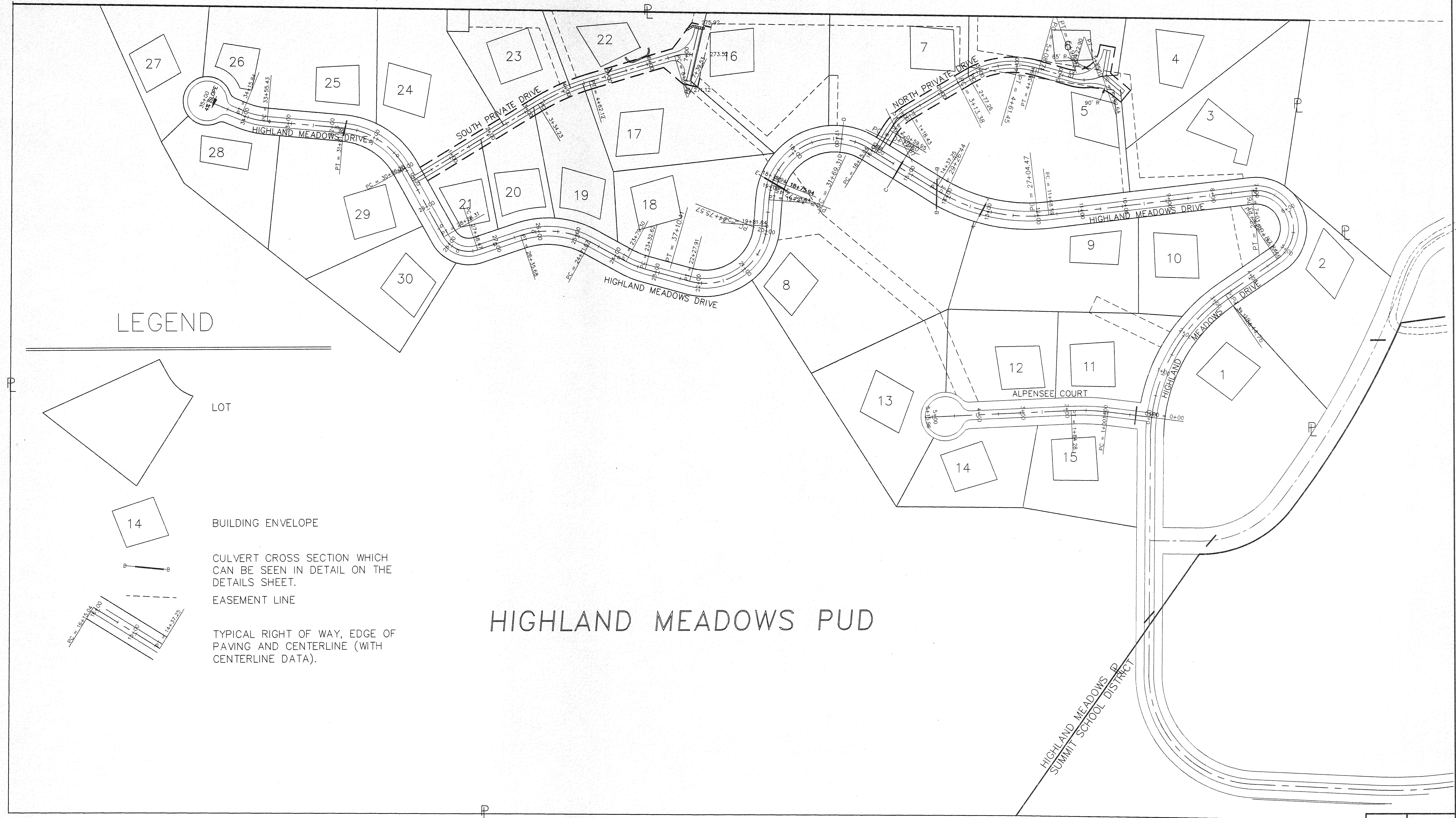
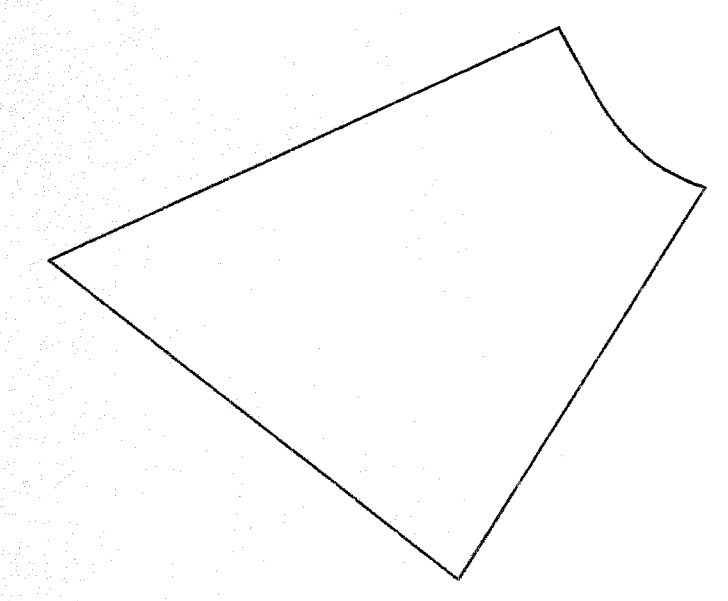


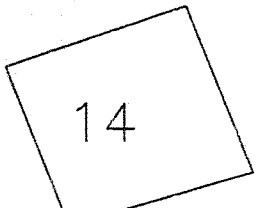
USFS



LEGEND



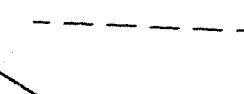
LOT



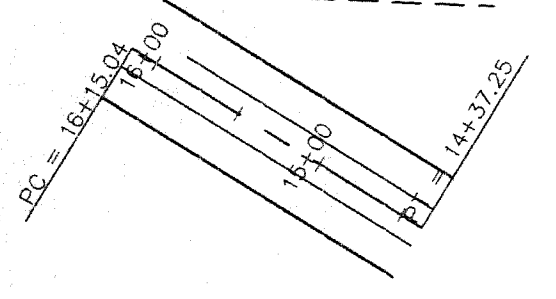
BUILDING ENVELOPE



CULVERT CROSS SECTION WHICH CAN BE SEEN IN DETAIL ON THE DETAILS SHEET.

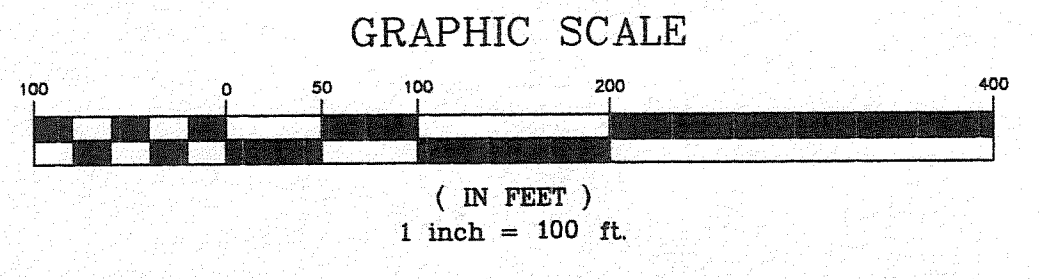
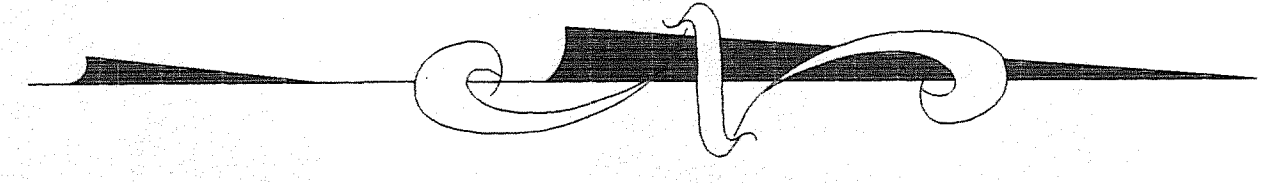


EASEMENT LINE



TYPICAL RIGHT OF WAY, EDGE OF PAVING AND CENTERLINE (WITH CENTERLINE DATA).

HIGHLAND MEADOWS PUD



LAKEVIEW MEADOWS SUBDIVISION

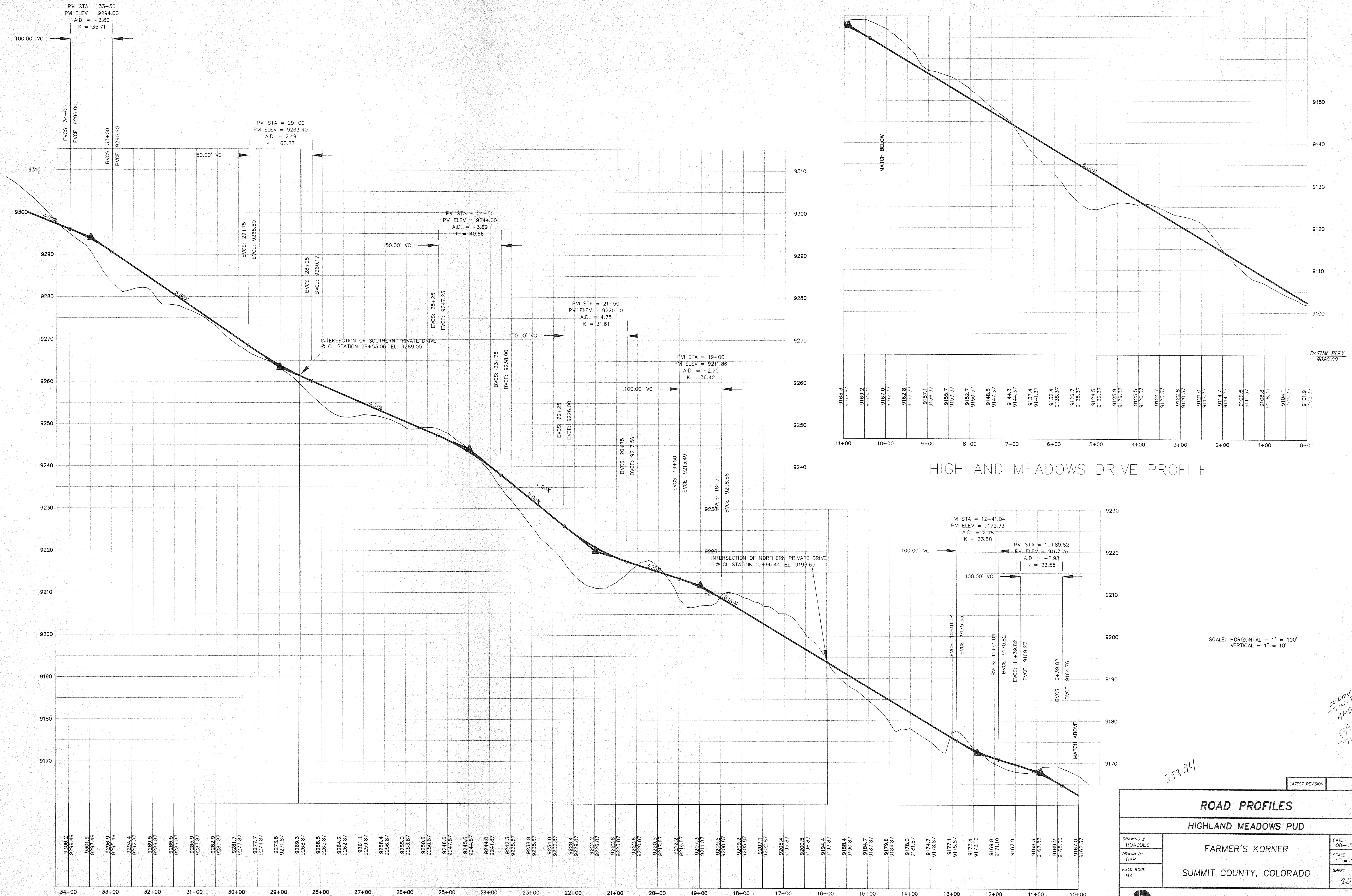
LATEST REVISION

STREET AND DRIVE PLAN

HIGHLAND MEADOWS PUD

DRAWING # ROADDES	FARMER'S KORNER	DATE 08-05-98
DRAWN BY GAP	SUMMIT COUNTY, COLORADO	SCALE 1" = 100'
FIELD BOOK NA		SHEET 19

PEARSON ENGINEERING, INC.
 P.O. BOX 1508, FRISCO, CO 80443
 970 668 5067



HIGHLAND MEADOWS DRIVE PROFILE

HIGHLAND MEADOWS DRIVE PROFILE (CONTINUED)

SCALE: HORIZONTAL = 1" = 100'
VERTICAL = 1" = 10'

DRAWING # ROADDES		DATE 08-05-98
DRAWN BY GAP		SCALE 1" = 100'
FIELD BOOK NA		SHEET 20
ROAD PROFILES		
HIGHLAND MEADOWS PUD		
FARMER'S KORNER		
SUMMIT COUNTY, COLORADO		
PEARSON ENGINEERING, INC. P.O. BOX 1308, FRISCO, CO 80443 970 668 5067		

SD DEW
7-16-8788
HMDO8
5941
7715

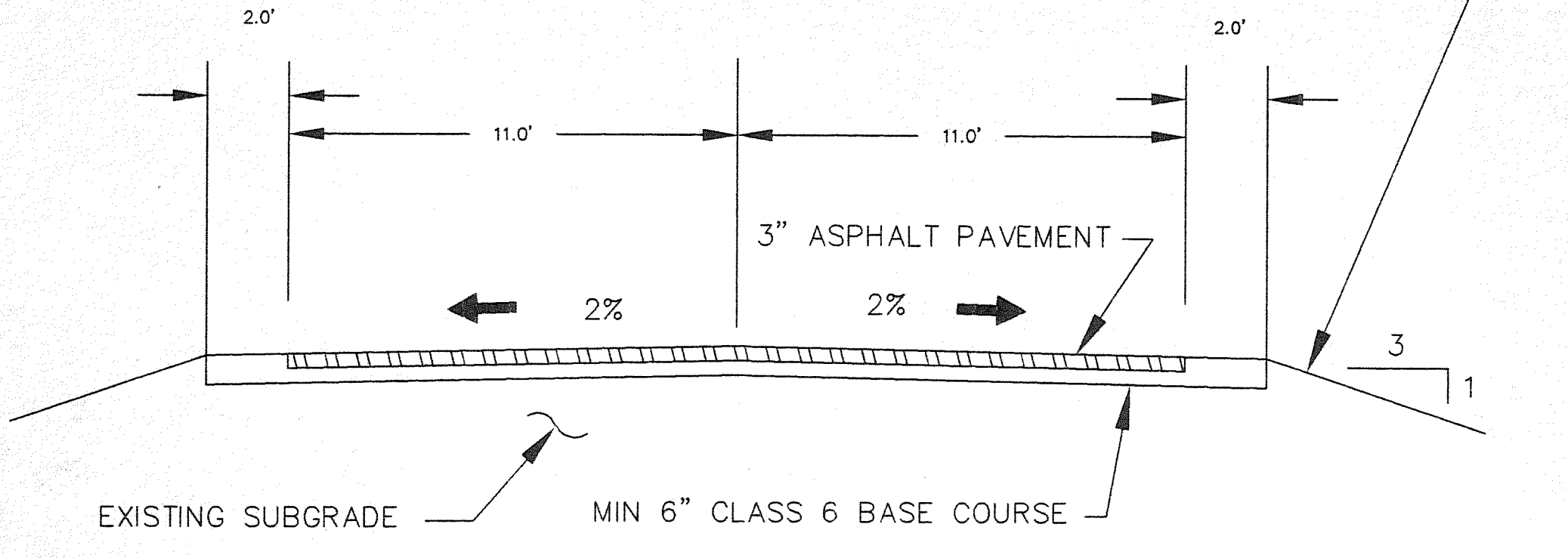
593.94

LATEST REVISION

10/10/98

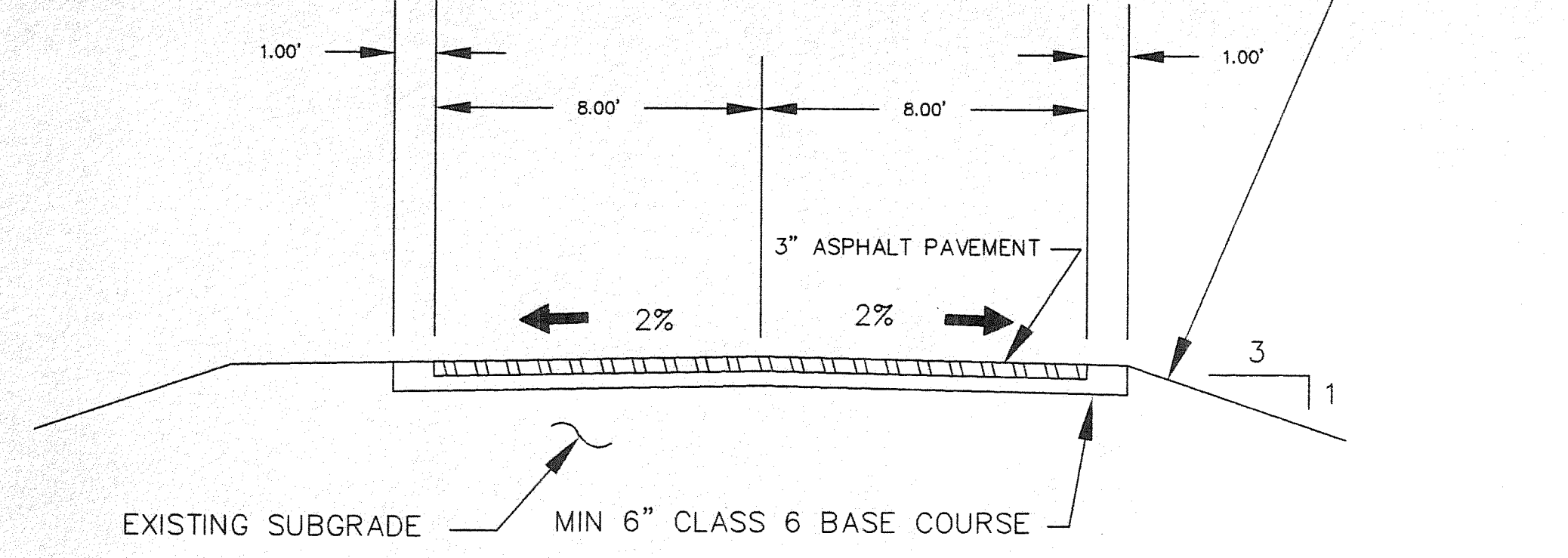
7-14-95 to 8/5/98 Sheets 19, 20, 21, 22, 23 Sheet Drive, Road Profiles, All Road Plan, HAM PUD Details

NOTE: CONSTRUCT NEW SHOULDER AND SLOPE TO MATCH EXISTING GRADE. 3:1 SHOWN AND PREFERRED, 2:1 IF NECESSARY.



HIGHLAND MEADOWS DRIVE PAVING CROSS SECTION NTS

NOTE: CONSTRUCT NEW SHOULDER AND SLOPE TO MATCH EXISTING GRADE. 3:1 SHOWN AND PREFERRED, 2:1 IF NECESSARY.



PRIVATE DRIVES PAVING CROSS SECTION NTS

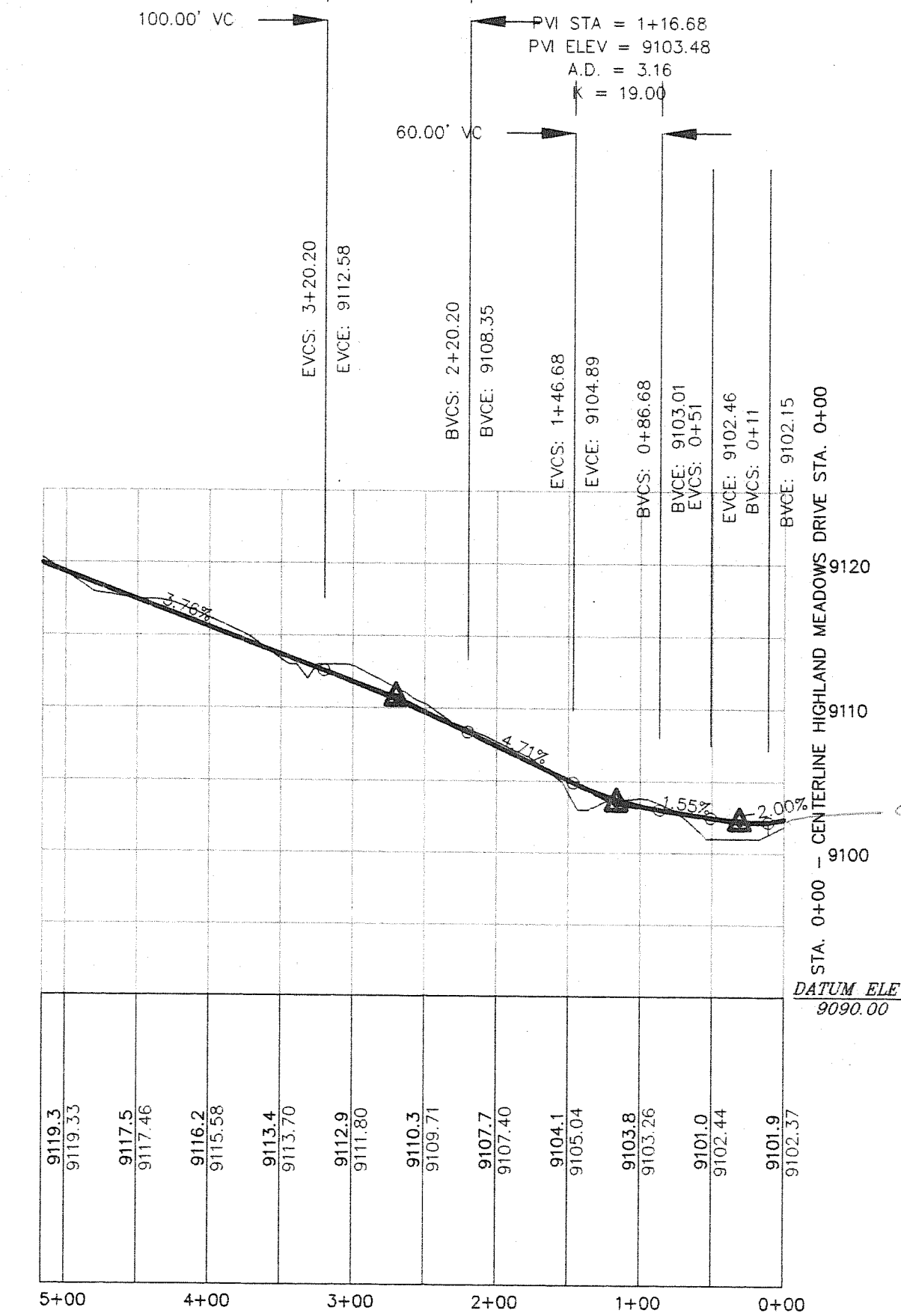
INDICATES ASPHALT PAVING

INDICATES ASPHALT PAVING

LOW POINT ELEV = 9102.41
 LOW POINT STA = 0+13
 PVI STA = 0+33
 PVI ELEV = 9102.41
 A.D. = 3.70
 K = 10.80

PVI STA = 2+70.20
 PVI ELEV = 9110.70
 A.D. = -0.95
 K = 105.36

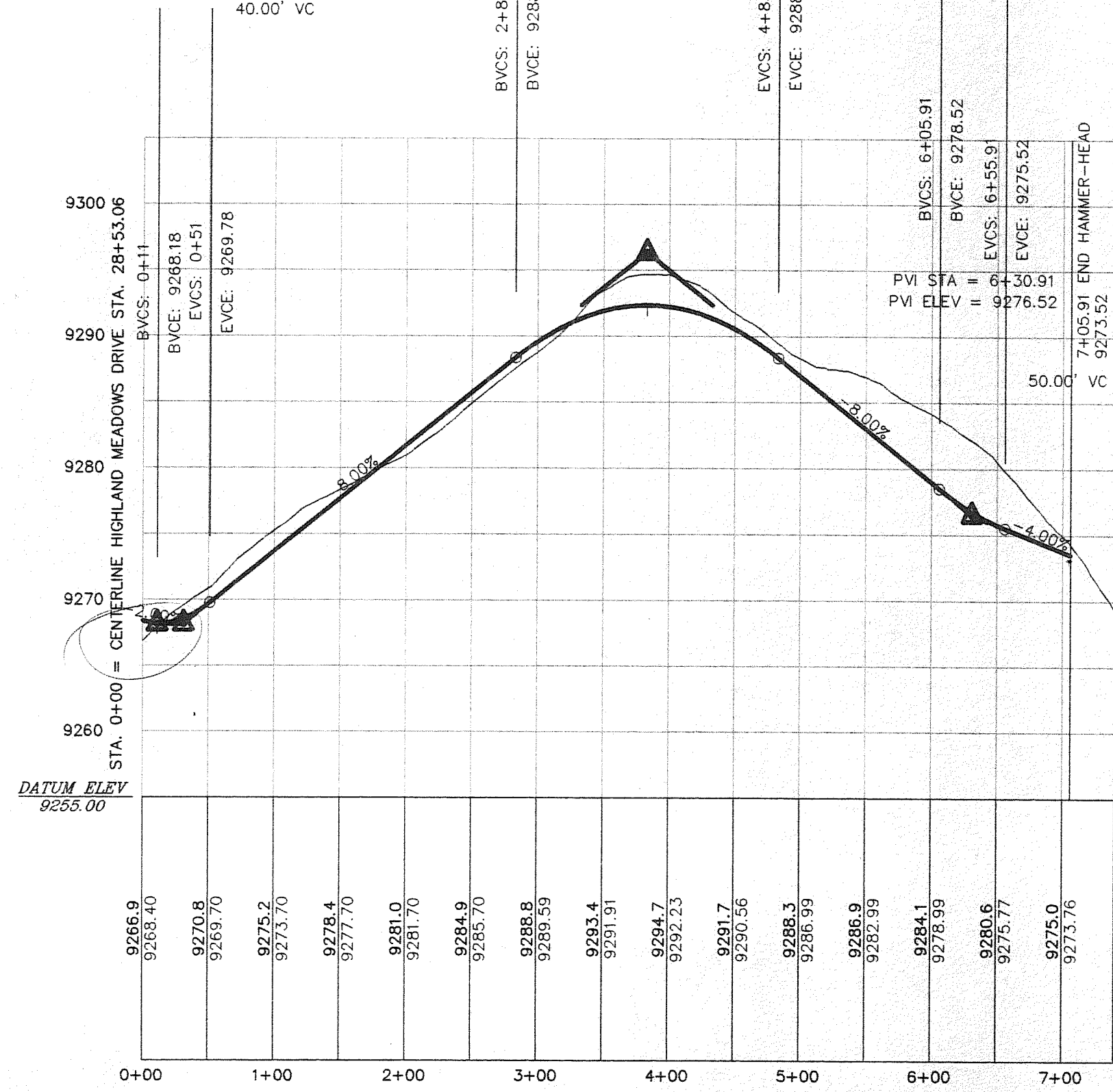
PVI STA = 1+16.68
 PVI ELEV = 9103.48
 A.D. = 3.16
 K = 19.00



ALPENSEE COURT PROFILE

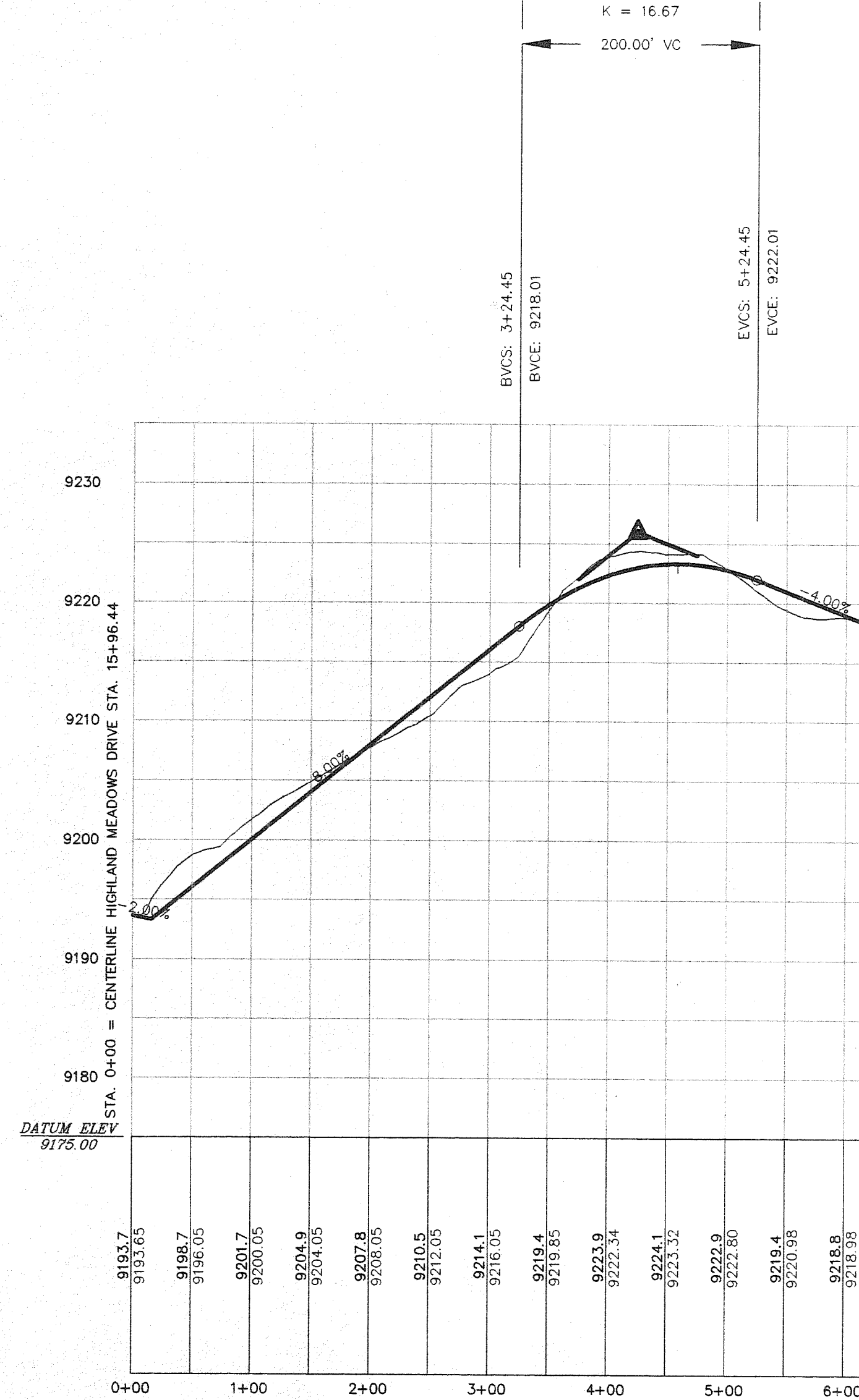
HIGH POINT ELEV = 9292.35
 HIGH POINT STA = 3+83.08
 PVI STA = 3+83.08
 PVI ELEV = 9296.35
 A.D. = -16.00
 K = 12.50

LOW POINT ELEV = 9268.18
 LOW POINT STA = 0+11
 PVI STA = 0+31
 PVI ELEV = 9268.18
 A.D. = 8.00
 K = 5.00

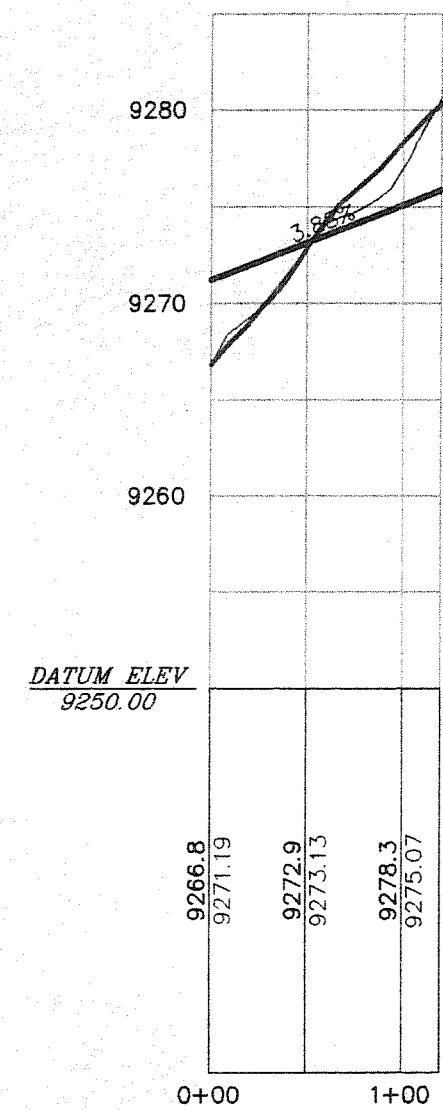


PRIVATE DRIVE SOUTH PROFILE

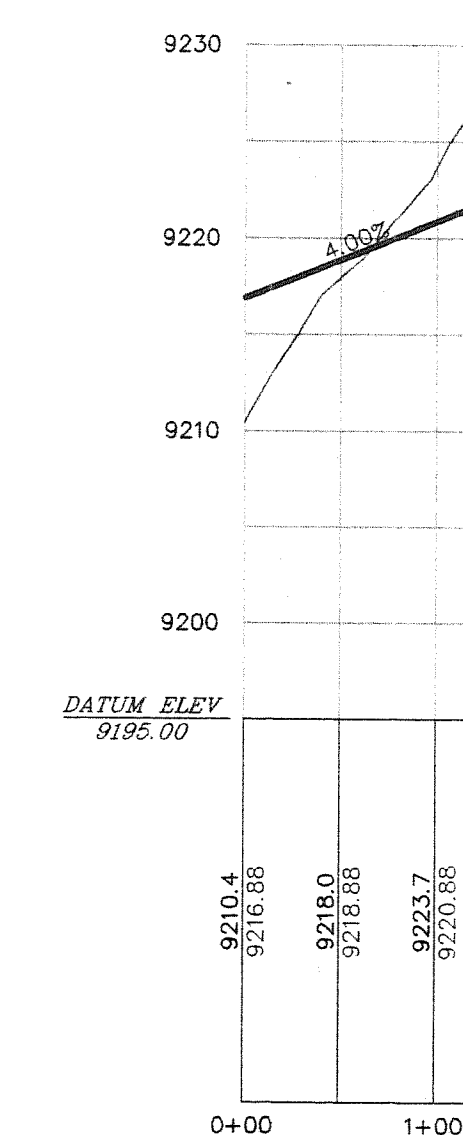
HIGH POINT ELEV = 9223.34
 HIGH POINT STA = 4+57.79
 PVI STA = 4+24.45
 PVI ELEV = 9226.01
 A.D. = -12.00
 K = 16.67



PRIVATE DRIVE NORTH PROFILE



SOUTH HAMMERHEAD CROSS SLOPE



NORTH HAMMERHEAD CROSS SLOPE

SCALE: HORIZONTAL - 1" = 100'
 VERTICAL - 1" = 10'

Old Sta 2+00 = New Sta 2+79.74
 2+00 @ 9280
 6990 - 9388
 212 - LT

LATEST REVISION		
ROAD PROFILES		
HIGHLAND MEADOWS PUD		
DRAWING # ROADDES	FARMER'S KORNER SUMMIT COUNTY, COLORADO	DATE 08-05-98
DRAWN BY GAP		SCALE 1" = 100'
FIELD BOOK NA		SHEET 21
PEARSON ENGINEERING, INC. P.O. BOX 1308, FRISCO, CO 80443 970 668 5067		